

AZ9

ENGINEERING PRECISION

Designed and Developed By

AZ9

ENGINEERING PRECISION

Duliajan, Assam, India

www.az-nine.com

Zsupport[®] with Zsupport[®] X^{*}

The point contact pipe support

Data Sheet

* Patented by and proprietary product of AZ9 Private Limited. All Rights Reserved

THE POINT CONTACT PIPE SUPPORT

Conventional pipe supports entrap water and moisture which leads to a higher risk of corrosion. Zsupport®* with Zsupport® X* addresses the issue with several key advantages:

Eliminates Water Traps:

The curved design of Zsupport® X prevents water from accumulating at the pipe-support interface, a major cause of corrosion.

Prevents Galvanic Corrosion:

Zsupport® X, the component in direct contact with the pipe, is made from a non-conductive material, eliminating the risk of galvanic corrosion.

Facilitates Inspection:

The design allows for easy visual and physical inspection of the pipe-support interface for early detection of corrosion issues.

By preventing water and moisture entrapment, stopping galvanic corrosion, and enabling simplified inspections, Zsupport® with Zsupport® X significantly reduces the risk of pipe corrosion at supports and promotes long term integrity and unhindered operation of your piping system.

Zsupport® with
Zsupport® X
Business Benefits

- Reduced Maintenance Costs.
- Extended Pipe Lifespan.
- Improved Safety.
- Simplified inspections.
- Enhanced System Reliability.

A better way to inspect and inhibit corrosion at pipe supports, for superior operational safety and extended asset life.

PRODUCT FEATURES:

01

Single Point Contact: Zsupport® X supports the pipe at a single point of contact, minimizing surface area and preventing water/moisture accumulation that can cause corrosion.

02

Corrosion Resistance:

1. Curved profile eliminates water traps.
2. Zsupport® X (pipe contact component) is made from high-strength, weather-resistant, electrically insulating industrial plastic, eliminating scope for galvanic corrosion.

03

Corrosion Inspection: The pipe-support interface is fully accessible for visual and physical inspection, enabling easy monitoring of pipe surface for corrosion and operation and maintenance (O&M) activities.

04

Wide Temperature Range: Operational temperature range of -20°C to 70°C.

05

High Load Capacity: Supports loads of up to 7,500kg in the point contact configuration.

06

Load bearing design: The design distributes the pipe's weight evenly and incorporates inherent load-bearing features for enhanced Resistance to failure.

07

Pipe Surface Protection: Zsupport® X, with its lower shear strength compared to steel, absorbs friction wear, protecting the pipe surface from damage caused by vibration, thermal expansion, earthquakes etc.

* Patented by and proprietary product of AZ9 Private Limited. All Rights Reserved



AZ9 PRIVATE LIMITED
DULIAJAN, ASSAM-786602, INDIA
©AZ9 Private Limited



+918822722164



www.az-nine.com



info@az-nine.com
sales@az-nine.com



TECHNICAL SPECIFICATIONS

GENERAL DATA

FEATURE	DESCRIPTION	BENEFIT	TESTING LABORATORY/ TEST STANDARD (IF APPLICABLE)
Load Capacity	Upto 7500 kg [#] in point contact configuration	Supports heavy pipes	TÜV Rheinland
Operational temperature Range	-20°C to 70°C [#]	Functions effectively in various environments	TÜV Rheinland
Prevention of water/moisture entrapment	Curved design prevents water and moisture from corroding the pipe surface	Reduces corrosion risk	N/A
Single Point Contact	Minimizes contact area with pipe	Reduces potential for damage and wear	N/A
Corrosion Inspection	Allows visual and physical access to the pipe-support interface	Facilitates easier inspection and monitoring for corrosion and regular O&M activities	N/A

Zsupport®*

FEATURE	DESCRIPTION	BENEFIT
Material of Construction	SS304 (Stainless Steel)	Durable and corrosion-resistant
Design Flexibility	Scope for design modification for various pipe sizes and orientations	Ensures secure fit for diverse piping systems
Inherent Load Bearing Design	Built-in load-bearing features	Provides additional support capacity
Compact Size	Small size for easy storage and handling	Saves inventory space and simplifies installation

Zsupport® X* (Contact Component)

FEATURE	DESCRIPTION	BENEFIT	TESTING LABORATORY/TEST STANDARD (IF APPLICABLE)
Contact Patch Design	Curved profile for minimal contact area	Minimizes scope for potential corrosion	N/A
Inspection Friendly	Allows comfortable visual and technical inspection	Enables thorough maintenance checks	N/A
Material Properties	High strength plastic [#] , resistant to weather and UV degradation [#]	Ensures long-lasting performance and durability	TÜV Rheinland/(ASTM G155-21 for 1000 hours)
Non-Conductive	Prevents galvanic corrosion	Eliminates galvanic interaction between pipe surface and support	N/A
Flame Retardant	Self extinguishing flammability rating [#]	Enhances fire safety	TÜV Rheinland / UL94 HB Classification
Friction Protection	Lower shear strength than steel	Protects pipe surface from wear due to vibration	N/A

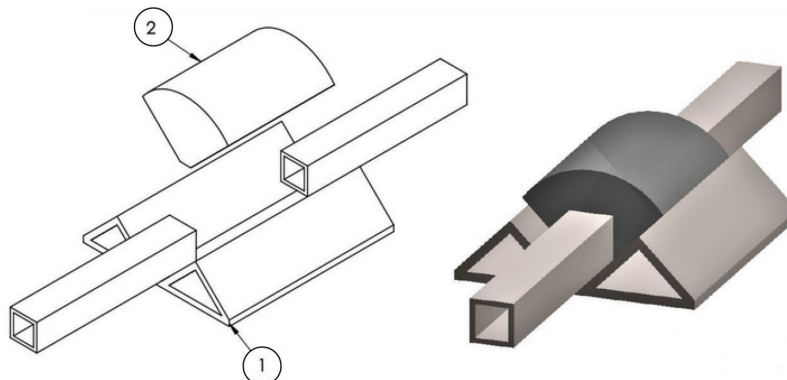
As per data of test reports issued by TÜV Rheinland.

* Patented by and proprietary product of AZ9 Private Limited. All Rights Reserved.



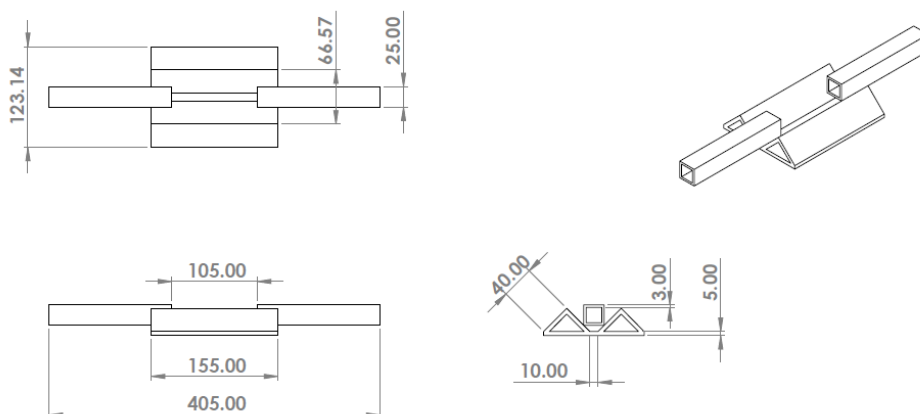
TECHNICAL DRAWINGS (ALL DIMENSIONS IN mm)

Zsupport® with Zsupport® X* Assembled

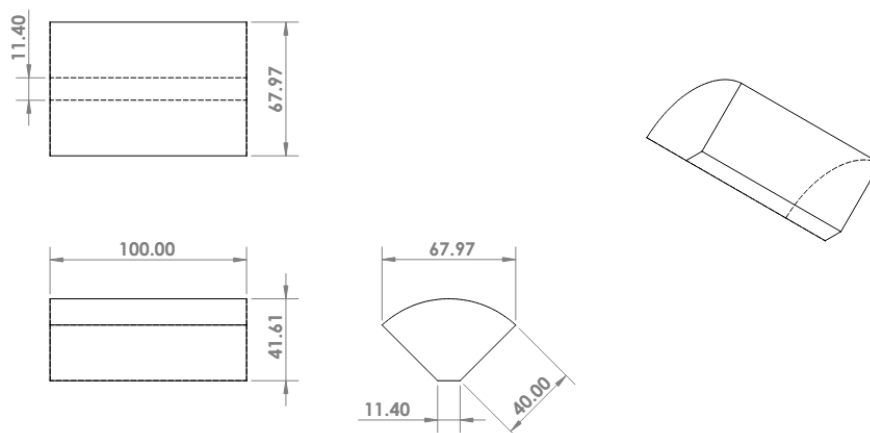


ITEM NO.	PART NUMBER	MATERIAL OF CONSTRUCTION
1	Zsupport	HIGH STRENGTH PLASTIC
2	Zsupport X	SS 304

Zsupport®*



Zsupport® X*



* Patented by and proprietary product of AZ9 Private Limited. All Rights Reserved

